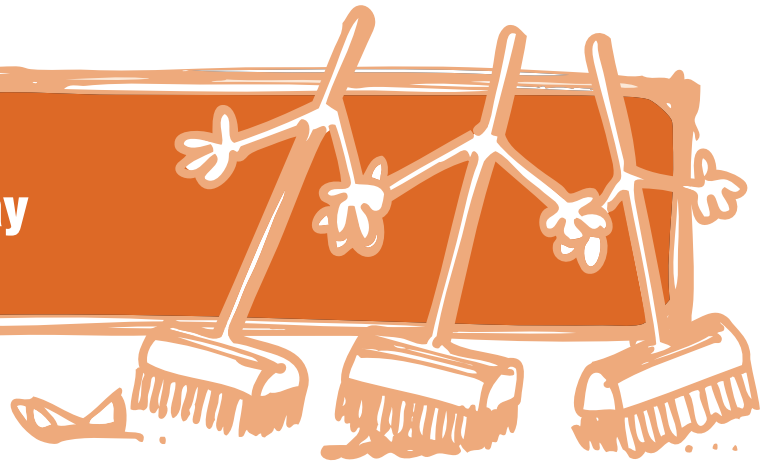


## How to organise a community clean-up day



Litter is a growing problem. Last year alone, an estimated 25 million tonnes were dropped in Britain, and the problem affects countryside and urban areas alike. This amount of litter is an eyesore that despoils the environment. It is also a hazard to pets and wild animals – one that killed or injured over 69,000 animals in Britain last year.

This guide will give you an overview of how you can combat this problem by organising a community clean-up day.

### Getting your hands dirty in three easy stages

#### 1. Plan the event

- decide on where you want to carry out your litter pick. Contact landowners to make sure you have legal access to this area. Landowners can be the town, district or county council, farmers, or local estate owners;
- carry out a full risk assessment of the area. Have a look at the guide produced by ENCAMS (see useful information below) for a comprehensive list of hazards to look out for, and use the enclosed risk assessment template;
- make a site map. Make a note of your route, and if possible identify locations for first aid, toilets, public phones, useful amenities, break areas and so on;
- decide when you will do the pick up;
- decide how you will present the clean-up to your volunteers. It can be a straight forward litter pick, or you can have a theme or set a challenge;
- now, rally your volunteers! Try to get support from other groups and individuals to make this a community event. You can use the enclosed poster and send out the enclosed press release to reach a wide range of volunteers;
- prepare for the event. You will need a range of equipment. Again, follow the link below for a comprehensive list;
- brief the volunteers prior to the event. Make sure they know where and when to meet, what clothes to wear and which equipment to bring if applicable;
- arrange for waste disposal. You can contact your local borough or district council, or dispose of the rubbish yourselves. Make sure you get specialist help for heavy objects;
- contact us for CPRE high visibility vests;
- you are encouraged to ensure you have adequate insurance cover, in case of accidental damage or injury during the event; and
- get publicity for the event. Let the media know about the event or use the enclosed press release to get publicity after the pick-up.

## 2. The day of the community pick-up

- inform and instruct the volunteers. Identify team leaders and make sure the volunteers know about health and safety risks, who is responsible for first aid, how to use equipment, the route, timings and so on. Provide the volunteers with the CPRE high visibility vests;
- be considerate. You are urged to not disturb animals or damage plants. Don't remove 'natural' rubbish like logs, stones and weeds as this can be home to animals. Don't try to release entangled animals; call the RSPCA if you come across any. Don't interfere with people not involved in the litter pick; and
- avoid danger. Make sure all volunteers, particularly children, are aware of what not to pick up, such as drug-related litter. Note their location and tell the council. For other precautions, please refer to the guide produced by ENCAMS (under useful information below).

## 3. After the event

- report the result. Note the amount of rubbish collected and include this in the press release, or tell your local council; and
- try to recycle as much of the rubbish as possible.

## Useful information

There are many guides on how to arrange community litter picks. ENCAMS (an environmental charity that runs the Keep Britain Tidy campaign) has produced a comprehensive guide. Visit [www.encams.org.uk/publications](http://www.encams.org.uk/publications) and scroll down to the bottom of the page – the guide is called *Litter – Organising a Cleanup*.

CPRE's *Stop the Drop* litter campaign pages: [www.cpre.org.uk](http://www.cpre.org.uk). You can also link from these pages to CPRE and CleanupUK's litteraction website: [www.litteraction.org.uk](http://www.litteraction.org.uk), which will help you to find your nearest litter picking group, or establish your own group.



### Disclaimer

CPRE makes no representations or warranties about the accuracy, completeness, or suitability for any purpose of the information published in this guide. All liability of CPRE howsoever arising for any such inaccuracies or errors is expressly excluded to the fullest extent permitted by law. This is a comprehensive limitation of liability that applies to all damages of any kind including (without limitation) compensatory, direct, indirect or consequential damages, loss of data, income or profit, loss of, or damage to, property and claims of third parties. Any individual acting upon information contained in this guide does so entirely at their own risk.